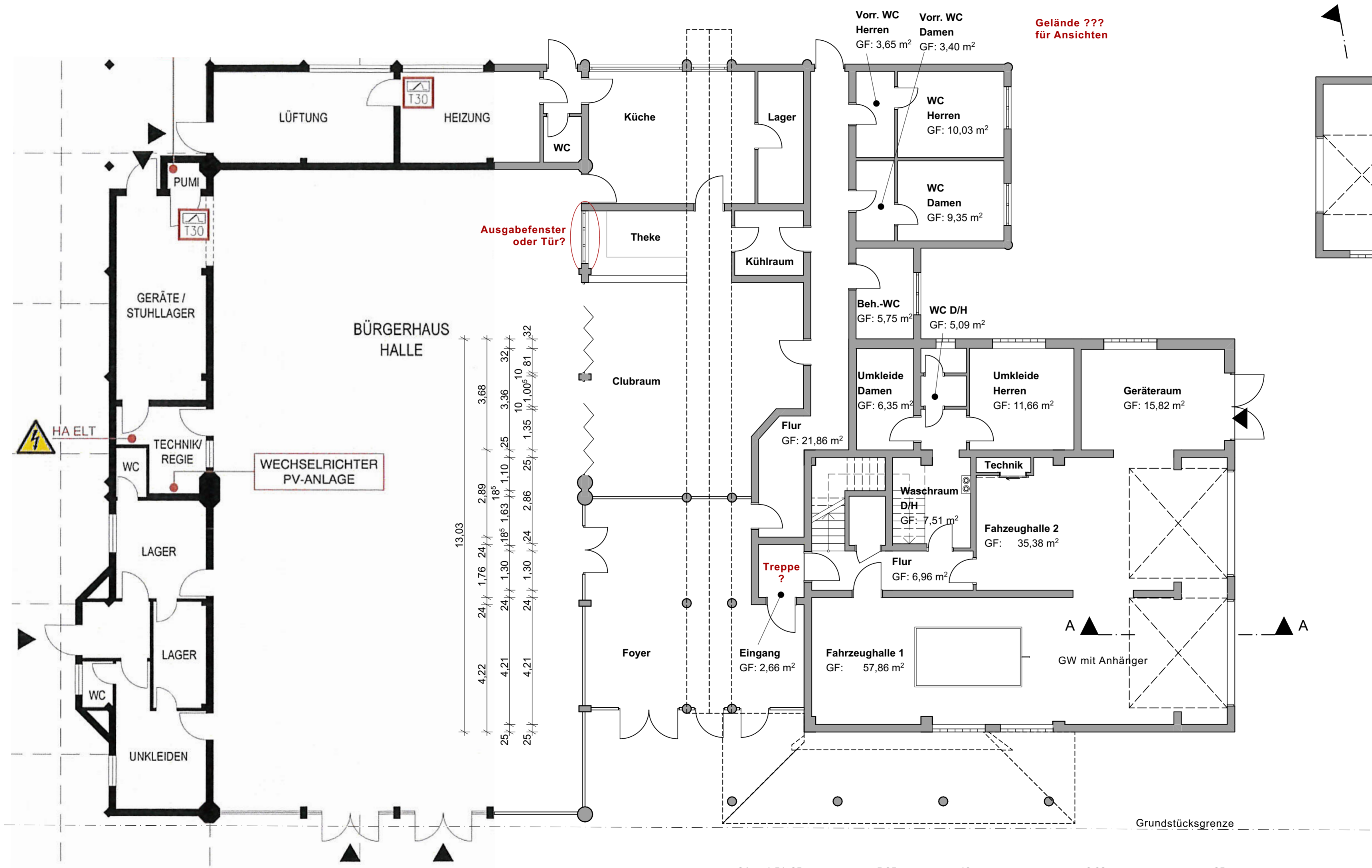


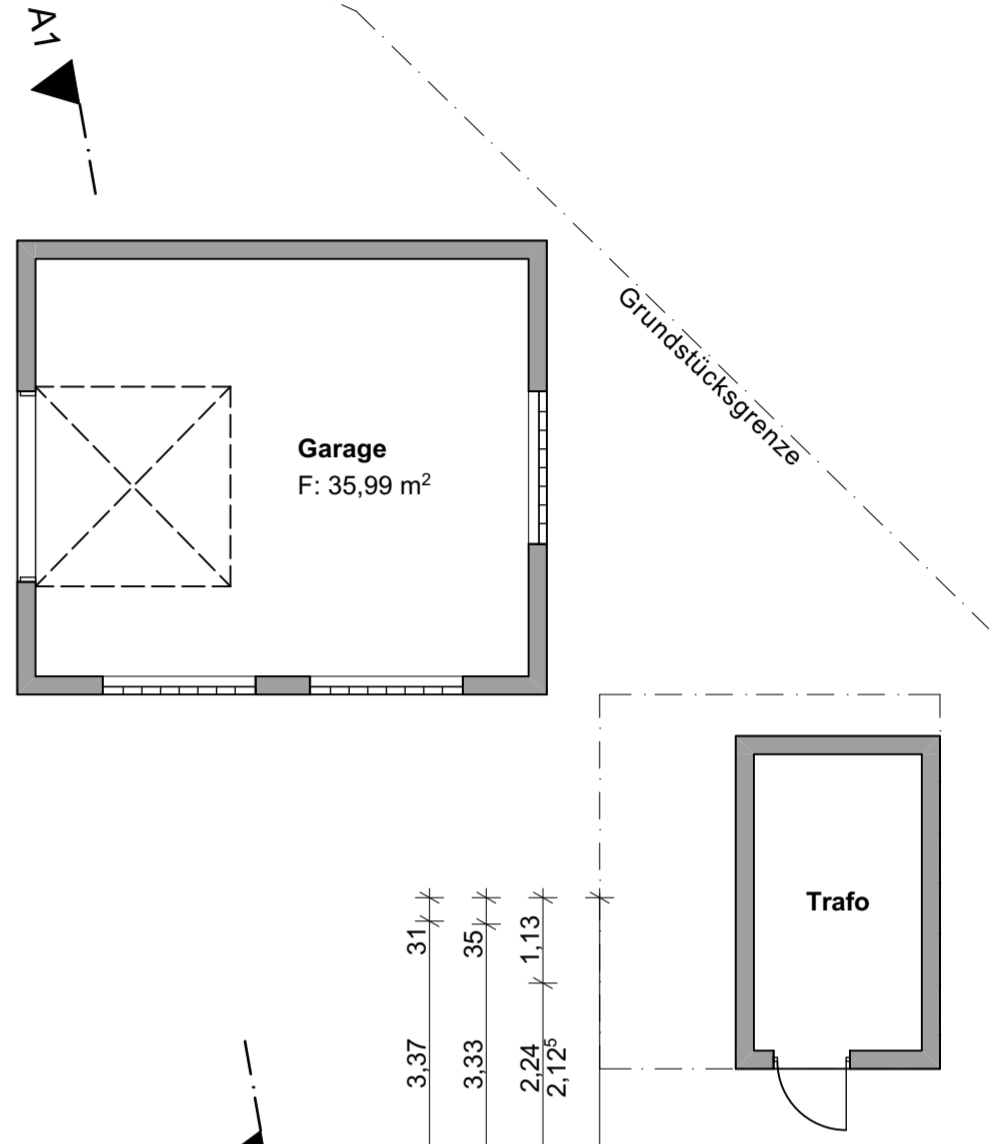
10,40
50, 63,5, 1,24, 1,76, 1,92, 1,76, 2,58
80, 80, 24, 4,75, 34
1,73, 24, 1,26, 26, 1,89, 24, 1,51, 10, 3,46, 24, 4,75, 34
24, 1,51, 25, 1,10, 14, 1,20, 24, 2,59, 18, 8,32, 25



13,03
4,22, 4,21, 4,21, 25, 25
24, 1,76, 24, 2,89, 18,5, 1,10, 25, 10, 3,36, 32, 1,35, 1,00, 81, 1,32
24, 1,30, 24, 1,30, 24, 2,86, 25, 1,35, 1,00, 81, 1,32
24, 1,76, 24, 2,89, 18,5, 1,10, 25, 10, 3,36, 32, 1,35, 1,00, 81, 1,32

13,03
3,37, 3,33, 2,24, 2,12, 1,13
25, 25, 98, 3,52, 3,15
4,40, 8,85, 78, 3,52, 3,15
4,21, 24, 2,86, 25, 1,35, 1,00, 81, 1,32
24, 1,76, 24, 2,89, 18,5, 1,10, 25, 10, 3,36, 32, 1,35, 1,00, 81, 1,32

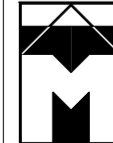
24, 1,51, 25, 5,35, 10, 8,32, 25
1,75, 25, 13,77, 25
4,25, 1,75, 50, 1,75, 6,02, 2,00, 2,00
14,27



**-Bestandserfassung-**

BAUVORHABEN:  
**Erweiterung Feuerwerrätehaus Born**  
 Mühlenbergstraße 21, 65329 Hohenstein-Born  
 Gemarkung: Born, Flur: \_\_\_\_, Flurstück: \_\_\_\_

BAUHERR:  
**Gemeindevorstand der Gemeinde Hohenstein**  
 Schwalbacher Straße 1, 65329 Hohenstein

PLANVERFASSER:  

**Architekturbüro Trimper & Massold PartG mbB**  
 Martin - Luther - Straße 1, 65307 Bad Schwalbach  
 Tel. (0 61 24) 1 28 96 - Fax: (0 61 24) 44 15

GEZEICHNET: Datum: 02.04.2020 Name: TD

PLANART: MAßSTAB: NR.:  
 GR Edgeschoss\_Bestand 1:100 01